

Official Statistics
Game Two
Clay County vs. Todd Central

30th Girls

OFFICIAL NCAA BASKETBALL BOX SCORE: *** FINAL ***

Date: 03-20-91 Site: Frankfort, Ky.

VISITORS (Last Name, First)

NO.	CLAY COUNTY	Tot FG		3-POINT		FT	FTA	Rebounds			PF	TP	A	TO	BLK	S	TIME
		FG	FGA	FG	FGA			OFF	DEF	TOT							
44	Howard, Angela	4	12	0	0	6	6	1	4	5	2	14	4	2	0	3	29:35
52	Brumley, Tonya	8	15	0	0	0	0	6	7	13	3	16	1	5	0	0	21:42
50	Jackson, Vonda	3	6	0	0	0	1	1	7	8	3	6	0	1	1	3	21:51
21	Dinsmore, Jen.	4	7	0	2	2	2	1	4	5	3	10	7	3	2	5	30:26
34	Hoskins, Bobbi	0	6	0	5	2	2	0	0	0	1	2	3	1	0	0	22:25
30	Burns, Beth	0	2	0	2	0	0	0	0	0	0	0	0	1	0	0	3:35
05	Dinsmore, Dawn	6	11	0	0	0	3	6	2	8	3	12	1	0	0	3	18:20
42	Smith, Shannon	2	8	0	2	2	2	2	0	2	2	6	0	1	0	1	7:25
54	Lundsford, Liana	0	0	0	0	0	0	0	0	0	0	0	0	0	0	0	1:21
40	Gray, Angela	0	0	0	0	0	0	0	0	0	0	0	0	0	0	0	0:40
55	Dezarn, Les	0	0	0	0	0	0	0	0	0	0	0	0	0	0	0	0:40
45	Reid, Amanda	0	0	0	0	0	0	0	0	0	0	0	0	0	0	0	0:40
24	Feltner, Edith	1	1	0	0	0	0	0	0	0	0	2	0	0	0	0	0:40
22	Murray, Jenia	0	0	0	0	0	0	0	1	1	0	0	0	0	0	0	0:40
TEAM REBOUNDS (INCLUDED IN TOTALS)								1		1							
TOTALS		28	68	0	11	12	16	18	25	43	17	68	16	14	3	15	160

TOTAL FG 1st HALF 9/22 40.9% 2nd HALF 19/46 41.3% GAME 28/68 41.2% DEADBALL
 3-POINT FG 1st HALF 0/7 0.0% 2nd HALF 0/4 0.0% GAME 0/11 0.0% REBOUNDS 2
 FREE THROWS 1st HALF 0/0 0.0% 2nd HALF 12/16 75.0% GAME 12/16 75.0%

HOME (Last Name, First)

NO.	TODD COUNTY CENTRAL	Tot FG		3-POINT		FT	FTA	Rebounds			PF	TP	A	TO	BLK	S	TIME
		FG	FGA	FG	FGA			OFF	DEF	TOT							
32	Harris, Gracie	11	15	0	0	3	5	5	13	18	2	25	0	2	1	1	30:33
34	Stewart, Letitia	1	8	1	2	0	0	1	0	1	0	3	3	2	0	1	21:36
54	Lassiter, Amy	4	9	0	0	0	1	2	6	8	3	8	2	1	0	0	31:20
14	Edmonds, Tina	3	10	0	3	0	1	0	2	2	3	6	6	9	0	0	31:20
40	Laster, Sarah	0	3	0	3	0	4	1	0	1	2	0	2	1	0	1	18:44
24	Brock, Laura	3	9	3	8	0	0	1	1	2	5	9	1	5	0	0	21:52
50	Laster, Hannah	0	0	0	0	0	0	0	0	0	1	0	0	0	0	0	1:15
44	Sweeney, Robin	0	0	0	0	0	0	0	0	0	0	0	0	0	0	0	0:40
42	Toliver, Shan.	1	1	0	0	0	0	1	0	1	0	2	0	0	0	0	0:40
22	Shemwell, Robin	0	0	0	0	0	0	1	0	1	0	0	1	0	0	0	0:40
30	Laster, Joyce	0	0	0	0	0	0	0	0	0	0	0	0	0	0	0	0:40
20	Slaughter, Kim	0	1	0	1	0	0	0	0	0	0	0	0	0	0	0	0:40
TEAM REBOUNDS (INCLUDED IN TOTALS)								2	1	3							
TOTALS		23	56	4	17	3	11	14	23	37	16	53	15	20	1	3	160

TOTAL FG 1st HALF 6/12 50.0% 2nd HALF 17/44 38.6% GAME 23/56 41.1% DEADBALL
 3-POINT FG 1st HALF 1/2 50.0% 2nd HALF 3/15 20.0% GAME 4/17 23.5% REBOUNDS 5
 FREE THROWS 1st HALF 0/0 0.0% 2nd HALF 3/11 27.3% GAME 3/11 27.3%

OFFICIALS: Dennis Newton, Dexter Campbell, G. Brown-Alt.

SCORE BY PERIODS

Technical: None

CLAY COUNTY 18 12 20 18 = 68
 TODD COUNTY CENTRAL 13 11 9 20 = 53

Attendance: 4,475

COMMENTS: POINTS OFF TURNOVERS

CLAY COUNTY 20 TODD COUNTY CENTRAL 23

SECOND CHANCE POINTS

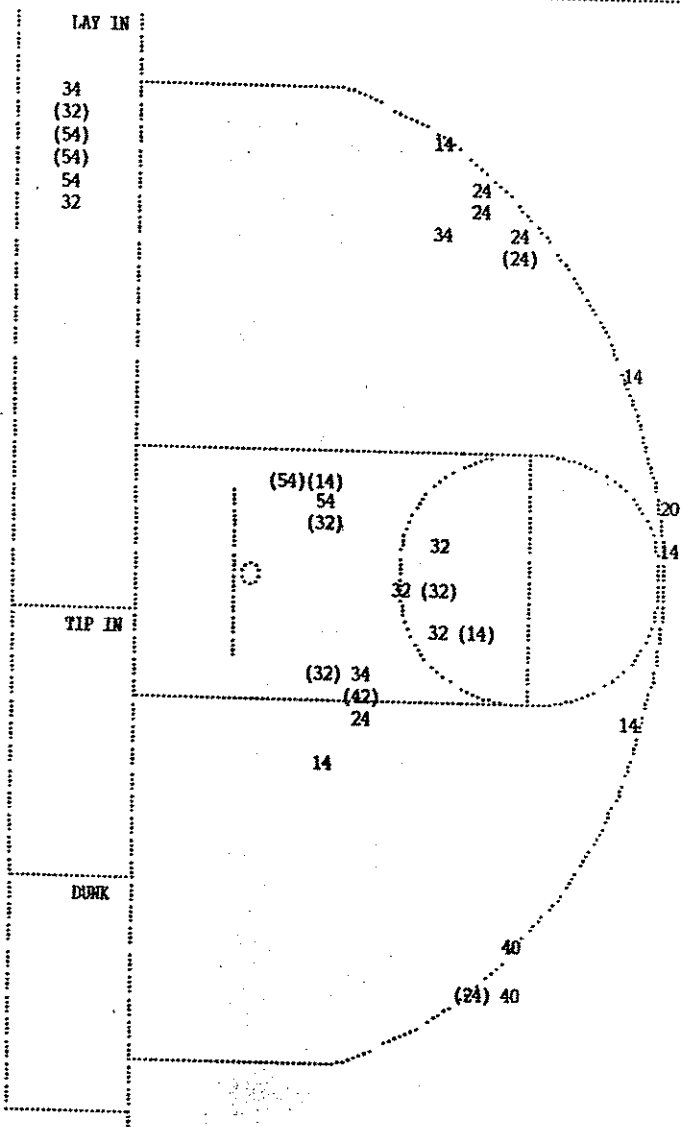
CLAY COUNTY 24 TODD COUNTY CENTRAL 7

TODD COUNTY CENTRAL				Time	Score	CLAY COUNTY	Player	Team
2	5			4 2:00				
		Foul on Brock, Laura		4 1:57				
		Sub In: Laster, Sarah Out: Stewart, Letitia		4 1:57	51-62*	Howard, Angela , 2 Free Throws made both	4-4	100% 4-6 66.6%
0-2	00.0%	2-7	28.5%	4 1:26		Foul on Jackson, Vonda	1	7
2	6	Laster, Sarah, 2 Free Throws missed both		4 1:26				
		Foul on Edmonds, Tina		4 1:21				
3	7	Foul on Brock, Laura		4 :40.7				
		Sub In: Sweeney, Robin Out: Lassiter, Amy		4 :40.7				
		Sub In: Toliver, Shan. Out: Brock, Laura		4 :40.7		Subs In: Gray, Angela, Dezarn, Les, Reid, Amanda Out: Dinsmore, Dawn , Hoskins, Bobbi , Jackson, Vonda		
				4 :40.7		Sub In: Hoskins, Bobbi Out: Dinsmore, Jen.		
				4 :40.7	51-66*	Hoskins, Bobbi , 2 Free Throws made both	2-2	100% 8-10 80.0%
		Subs In: Shemwell, Robin, Laster, Joyce, Slaughter, Kim		4 :40.7		Sub In: Feltner, Edith Out: Hoskins, Bobbi		
		Out: Edmonds, Tina, Harris, Gracie , Laster, Sarah		4 :40.7				
1-1	100%	8-19	42.1%	4 :40.2	*53-66	Sub In: Murray, Jenia Out: Howard, Angela		
1	5	6 ft Lane Turnaround by Toliver, Shan. Assist by Shemwell, Robin		4 :16.3	53-68*	16 ft Right Base Line Jump shot by Feltner, Edith	1-1	100% 5-15 33.3%
0-1	Tot-1	0-7	Tot-13	4 :00.2				
0-1	Tot-1	0-8	Tot-14	4 :00.2				
		Rebound by Shemwell, Robin		4 :00.2				
		Rebound by Toliver, Shan.		4 :00.2		Rebound by Murray, Jenia	D-1	Tot-1 D-8 Tot-12

Player				Team	TODD COUNTY CENTRAL	Time	Score	CLAY COUNTY	Player				Team
Edmonds, Tina, Brock, Laura, Harris, Gracie, Laster, Sarah, Lassiter, Amy								Dinsmore, Jen., Howard, Angela, Dinsmore, Dawn, Jackson, Vonda, Smith, Shannon					
						4 7:43	33-52*	8 ft Lane Jump shot by Dinsmore, Jen.	1-1	100%	1-1	100%	
						4 7:29		Steal by Dinsmore, Dawn	1			1	
1		1				4 7:29							
						4 7:22	33-54*	Driving Layup by Smith, Shannon	1-1	100%	2-2	100%	
								Assist by Dinsmore, Dawn	1			1	
1		1				4 6:43							
						4 6:43		Sub In: Brumley, Tonya Out: Jackson, Vonda					
1		2				4 6:34							
						4 6:22	33-56*	8 ft Lane Jump shot by Dinsmore, Dawn	1-1	100%	3-6	50.0%	
						4 6:06		Foul on Dinsmore, Dawn	1			1	
1-2	50.0%	1-2	50.0%			4 6:06	*34-56						
1-3	33.3%	1-5	20.0%			4 5:49	*36-56						
						4 5:38		Foul on Brumley, Tonya	1			2	
1		3				4 5:30							
						4 5:30		Dinsmore, Dawn, 2 Free Throws missed both	0-2	00.0%	0-2	00.0%	
1-3	33.3%	2-7	28.5%			4 5:20	*39-56						
1		1						Assist by Edmonds, Tina					
						4 5:01	39-58*	Follow Layup by Dinsmore, Dawn	2-3	66.6%	4-10	40.0%	
						4 4:48		Steal by Smith, Shannon	1			2	
1		2				4 4:47							
						4 4:27		Foul on Dinsmore, Jen.	1			3	
2-4	50.0%	3-9	33.3%			4 4:26	*41-58						
1		2						Assist by Laster, Sarah					
						4 4:25		Foul on Dinsmore, Dawn	2			4	
						4 4:25		Subs In: Jackson, Vonda, Hoskins, Bobbi					
								Out: Smith, Shannon, Howard, Angela					
0-1	00.0%	1-3	33.3%			4 4:25		Edmonds, Tina, 1 Free Throw missed					
						4 3:55		Traveling Violation on Brumley, Tonya	1			1	
						4 3:51		Sub In: Howard, Angela Out: Dinsmore, Dawn					
1-1	100%	4-10	40.0%			4 3:51	*43-58						
2-2	100%	5-11	45.4%			4 3:26	*45-58						
2		3						Layup Alley Oop by Lassiter, Amy					
								Assist by Edmonds, Tina					
						4 3:26		Foul on Howard, Angela	1			5	
						4 3:26		Sub In: Stewart, Letitia Out: Laster, Sarah					
0-1	00.0%	1-4	25.0%			4 3:26		Lassiter, Amy, 1 Free Throw missed					
						4 3:24		Traveling Violation on Brumley, Tonya	2			2	
1-2	50.0%	6-12	50.0%			4 3:16	*47-58						
						4 3:16		Foul on Brumley, Tonya	2			6	
						4 3:16		REB: 8 A: 3 BLK: 0 TO: 2 PF: 3					
								S: 0 FT: 1-4 25.0% FG: 6-12 50.0%					
								T I M E - O U T CLAY COUNTY No. 1					
								REB: 8 A: 1 BLK: 3 TO: 2 PF: 6					
								S: 2 FT: 0-2 00.0% FG: 4-13 30.7%					
2-3	66.6%	2-5	40.0%			4 3:16	*48-58						
1		4				4 3:11		Foul on Brock, Laura					
						4 3:11	48-60*	Howard, Angela, 2 Free Throws made both	2-2	100%	2-4	50.0%	
						4 2:50		Traveling Violation on Brumley, Tonya	3			3	
						4 2:50		Sub In: Dinsmore, Dawn Out: Brumley, Tonya					
						4 2:50		REB: 9 A: 1 BLK: 3 TO: 3 PF: 6					
								S: 2 FT: 2-4 50.0% FG: 4-13 30.7%					
2-5	40.0%	7-14	50.0%			4 2:38	*51-60						
3		4						Assist by Edmonds, Tina					
						4 2:17		Steal by Howard, Angela	1			3	
1		3				4 2:15		Dribbling Error on Harris, Gracie					

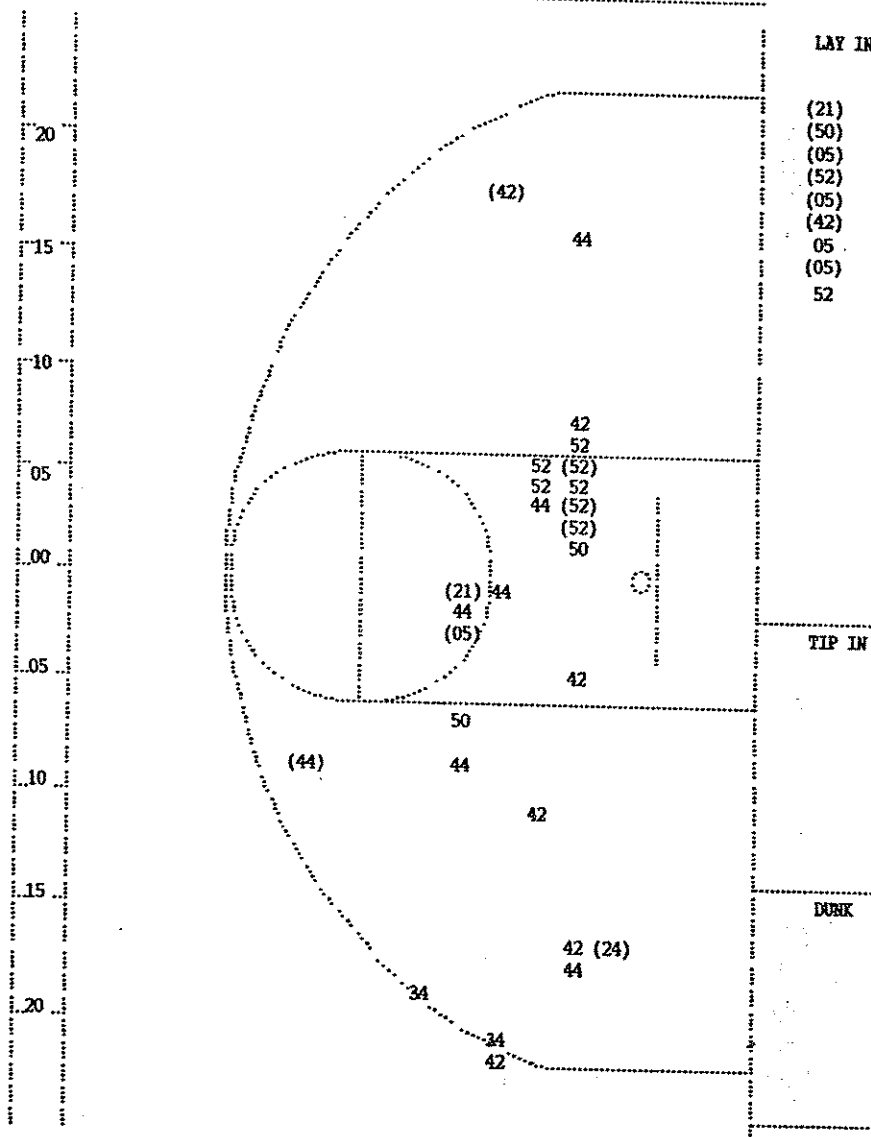
Player	Team	TODD COUNTY CENTRAL	Time	Score	CLAY COUNTY	Player	Team
1	3	Assist by Edmonds, Tina					
2	3	Foul on Lassiter, Amy	3	1:15			
		Sub In: Harris, Gracie Out: Laster, Sarah	3	1:15			
		Sub In: Laster, Hannah Out: Stewart, Letitia	3	1:15			
1	6	Traveling Violation on Harris, Gracie	3	:53.3			
			3	:52.8	Sub In: Burns, Beth Out: Hoskins, Bobbi		
			3	:29.5	33-48* Turnaround Layup by Dinsmore, Dawn	2-2	100% 9-20 45.0%
			3	:29.5			
			3	:29.5	Sub In: Smith, Shannon Out: Dinsmore, Jen.		
			3	:29.5	Sub In: Lundsford, Liana Out: Brumley, Tonya		
			3	:29.3	Dinsmore, Dawn , 1 Free Throw missed	0-1	00.0% 0-2 00.0%
			3	:04.2	33-50* 19 ft Left Side Jump shot by Smith, Shannon	1-3	33.3% 10-21 47.6%
					Assist by Howard, Angela	3	6

Player	Team	TODD COUNTY CENTRAL	Time	Score	CLAY COUNTY	Player	Team
Harris, Gracie	1	Ball to Lady Rebels			Howard, Angela	1	Hoskins, Bobbi
-1	100% 1-1	8 ft Lane Jump shot by Harris, Gracie	3	7:48	*26-30		
1	1	Assist by Lassiter, Amy					
			3	7:34	26-32*	6 ft Left Side Jump shot by Brumley, Tonya	1-1 100% 1-1 100%
						Assist by Howard, Angela	1 1
			3	6:44	26-34*	18 ft Right Angle Jump shot by Howard, Angela	1-1 100% 2-3 66.6%
						Assist by Brumley, Tonya	1 2
1	1	Dribbling Error on Edmonds, Tina	3	6:28		Steal by Dinsmore, Jen.	1 1
			3	6:27			
			3	6:23	26-36*	Fast Break Layup by Dinsmore, Jen.	1-1 100% 3-4 75.0%
			3	6:00		Foul on Jackson, Vonda	1 1
			3	5:53	26-38*	4 ft Lane Fast Break by Brumley, Tonya	2-2 100% 4-5 80.0%
						Assist by Dinsmore, Jen.	1 3
1	1	Foul on Lassiter, Amy	3	5:23	26-40*	Jump shot Layup by Jackson, Vonda	1-2 50.0% 5-7 71.4%
			3	5:18			
		REB: 1 A: 1 BLK: 0 TO: 1 PF: 1	3	5:18		REB: 5 A: 3 BLK: 0 TO: 0 PF: 1	
		S: 0 FT: 0-0 00.0% FG: 1-5 20.0%	T I M E - O U T			S: 1 FT: 0-0 00.0% FG: 5-7 71.4%	
		No. 1 TODD COUNTY CENTRAL					
1	2	Foul on Laster, Sarah	3	5:18		Jackson, Vonda , 1 Free Throw missed	0-1 00.0% 0-1 00.0%
			3	4:40			
			3	4:40		Sub In: Dinsmore, Dawn Out: Jackson, Vonda	
			3	4:29	26-42*	Follow Layup by Dinsmore, Dawn	1-1 100% 6-9 66.6%
			3	4:12		Traveling Violation on Brumley, Tonya	1 1
			3	4:12		Sub In: Lundsford,Liana Out: Brumley, Tonya	
1	2	Dribbling Error on Stewart,Letitia	3	4:12		Steal by Dinsmore, Dawn	1 2
			3	4:08			
			3	3:50		Sub In: Smith, Shannon Out: Hoskins, Bobbi	
			3	3:43		Foul on Dinsmore, Dawn	1 2
		Sub In: Brock, Laura Out: Laster, Sarah	3	3:42			
-2	50.0% 1-2	Harris, Gracie , 2 Free Throws missed 1st made 2nd	3	3:42	*27-42		
1	1	Steal by Stewart,Letitia	3	3:40			
			3	3:38		Bad Pass by Howard, Angela	1 2
-4	50.0% 2-9	4 ft Lane Jump shot by Harris, Gracie	3	3:34	*29-42		
			3	3:20			
			3	3:20		Foul on Smith, Shannon	1 3
			3	3:20		Sub In: Brumley, Tonya Out: Dinsmore, Dawn	
2	3	Traveling Violation on Stewart,Letitia	3	3:20		Sub In: Jackson, Vonda Out: Lundsford,Liana	
			3	3:16			
			3	3:15		Sub In: Hoskins, Bobbi Out: Smith, Shannon	
			3	2:42		Steal by Dinsmore, Jen.	2 3
2	4	Dribbling Error on Edmonds, Tina	3	2:41			
			3	2:36	29-44*	Fast Break Layup by Brumley, Tonya	3-5 60.0% 7-15 46.6%
						Assist by Dinsmore, Jen.	2 4
			3	2:26		Steal by Jackson, Vonda	1 4
3	5	Bad Pass by Edmonds, Tina	3	2:24			
-5	60.0% 3-12	Fast Break Layup by Harris, Gracie	3	2:11	*31-44		
1	2	Assist by Stewart,Letitia					
			3	2:02			
		REB: 9 A: 2 BLK: 1 TO: 5 PF: 2	3	2:02		REB: 10 A: 4 BLK: 0 TO: 2 PF: 3	
		S: 1 FT: 1-2 50.0% FG: 3-12 25.0%	T I M E - O U T		CLAY COUNTY No. 1	S: 4 FT: 0-1 00.0% FG: 7-16 43.7%	
		Sub In: Laster, Sarah Out: Harris, Gracie	3	2:02			
			3	1:57		Sub In: Dinsmore, Dawn Out: Jackson, Vonda	
			3	1:57	31-46*	4 ft Lane Turnaround by Brumley, Tonya	4-6 66.6% 8-17 47.0%
						Assist by Howard, Angela	2 5
-2	50.0% 4-13	Driving Layup by Lassiter, Amy	3	1:31	*33-46		



TODD COUNTY CENTRAL

Player	Player	Player
32 - Harris, Gr 4/ 8 50.0%	20 - Slaughter, 0/ 1 0.0%	
34 - Stewart, Le 0/ 3 0.0%	24 - Brock, Lau 2/ 6 33.3%	
54 - Lassiter, 3/ 5 60.0%	42 - Tolliver, S 1/ 1 100.0%	
14 - Edmonds, T 2/ 7 28.5%		
40 - Laster, Sa 0/ 2 0.0%		
Layups 1-9 Ft 10-15 Ft Over 15 Ft 3 Pointers Total		
3 / 6 6 / 13 1 / 1 0 / 2 2 / 11 12 / 33		
50.0% 46.2% 100.0% 0.0% 18.2% 36.4%		



CLAY COUNTY

Player	Player	Player
44 - Howard, An 1/ 7 14.2%	05 - Dinsmore, 4/ 5 80.0%	
52 - Brunley, T 4/ 9 44.4%	24 - Feltner, E 1/ 1 100.0%	
50 - Jackson, V 1/ 3 33.3%	42 - Smith, Sha 2/ 7 28.5%	
21 - Dinsmore, 2/ 2 100.0%		
34 - Hoskins, B 0/ 2 0.0%		
Layups 1-9 Ft 10-15 Ft Over 15 Ft 3 Pointers Total		
7 / 9 5 / 15 0 / 3 3 / 5 0 / 4 15 / 36		
77.8% 33.3% 0.0% 60.0% 0.0% 41.7%		

OFFICIAL NCAA BASKETBALL BOX SCORE: * OFFICIAL FIRST HALF *

Date: 03-20-91 Site: Frankfort, Ky.

VISITORS (Last Name, First)

NO.	Clay County	Tot FG		3-POINT		FT	FTA	Rebounds			PF	TP	A	TO	BLK	S	TIME
		FG	FGA	FG	FGA			OFF	DEF	TOT							
44	Howard, Angela	3	5	0	0	0	0	1	2	3	1	6	1	1	0	2	14:49
52	Brumley, Tonya	4	6	0	0	0	0	5	3	8	1	8	0	1	0	0	11:10
50	Jackson, Vonda	2	3	0	0	0	0	0	3	3	1	4	0	1	0	2	12:06
21	Dinsmore, Jen.	2	5	0	2	2	2	1	1	2	2	6	5	3	0	3	15:35
34	Hoskins, Bobbi	0	4	0	3	0	0	0	0	0	1	0	3	1	0	0	12:07
30	Burns, Beth	0	2	0	2	0	0	0	0	0	0	0	0	1	0	0	2:43
05	Dinsmore, Dawn	2	6	0	0	0	0	1	1	2	0	4	0	0	0	1	8:44
42	Smith, Shannon	0	1	0	0	2	2	0	0	0	1	2	0	1	0	0	2:46
TEAM REBOUNDS (INCLUDED IN TOTALS)								1	1	2							
TOTALS		13	32	0	7	4	4	9	10	19	7	30	9	9	0	8	80

TOTAL FG 1st HALF 9/22 40.9% 2nd HALF 4/10 40.0% GAME 13/32 40.6% DEADBALL
 3-POINT FG 1st HALF 0/7 0.0% 2nd HALF 0/0 0.0% GAME 0/7 0.0% REBOUNDS 1
 FREE THROWS 1st HALF 0/0 0.0% 2nd HALF 4/4 100.0% GAME 4/4 100.0%

HOME (Last Name, First)

NO.	TODD COUNTY CENTRAL	Tot FG		3-POINT		FT	FTA	Rebounds			PF	TP	A	TO	BLK	S	TIME
		FG	FGA	FG	FGA			OFF	DEF	TOT							
32	Harris, Gracie	7	7	0	0	0	0	1	4	5	2	14	0	0	0	0	16:00
34	Stewart, Letitia	1	5	1	2	0	0	0	0	0	0	3	2	0	0	0	13:22
54	Lassiter, Amy	1	4	0	0	0	0	1	4	5	0	2	1	0	0	0	16:00
14	Edmonds, Tina	1	3	0	0	0	0	0	0	0	1	2	2	6	0	1	16:00
40	Laster, Sarah	0	1	0	1	0	2	0	0	0	0	0	1	0	0	1	7:48
24	Brock, Laura	1	3	1	3	0	0	0	0	0	2	3	1	5	0	0	10:50
TEAM REBOUNDS (INCLUDED IN TOTALS)								1	1	2							
TOTALS		11	23	2	6	0	2	3	9	12	5	24	7	11	0	2	80

TOTAL FG 1st HALF 6/12 50.0% 2nd HALF 5/11 45.5% GAME 11/23 47.8% DEADBALL
 3-POINT FG 1st HALF 1/2 50.0% 2nd HALF 1/4 25.0% GAME 2/6 33.3% REBOUNDS 1
 FREE THROWS 1st HALF 0/0 0.0% 2nd HALF 0/2 0.0% GAME 0/2 0.0%

OFFICIALS: Dennis Newton, Dexter Campbell, G. Brown-Alt.

SCORE BY PERIODS

Technical: None

Clay County 18 12 = 30
 TODD COUNTY CENTRAL 13 11 = 24

Attendance: 4,475

COMMENTS: POINTS OFF TURNOVERS

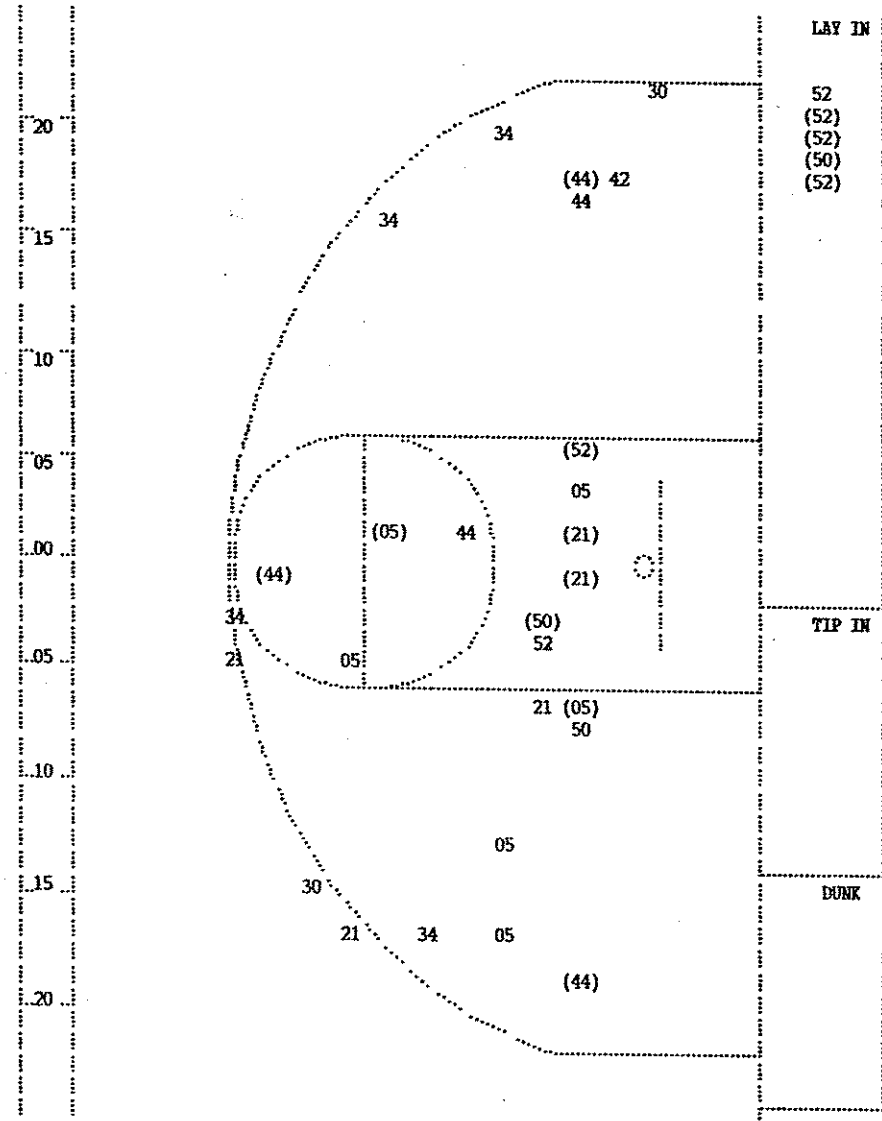
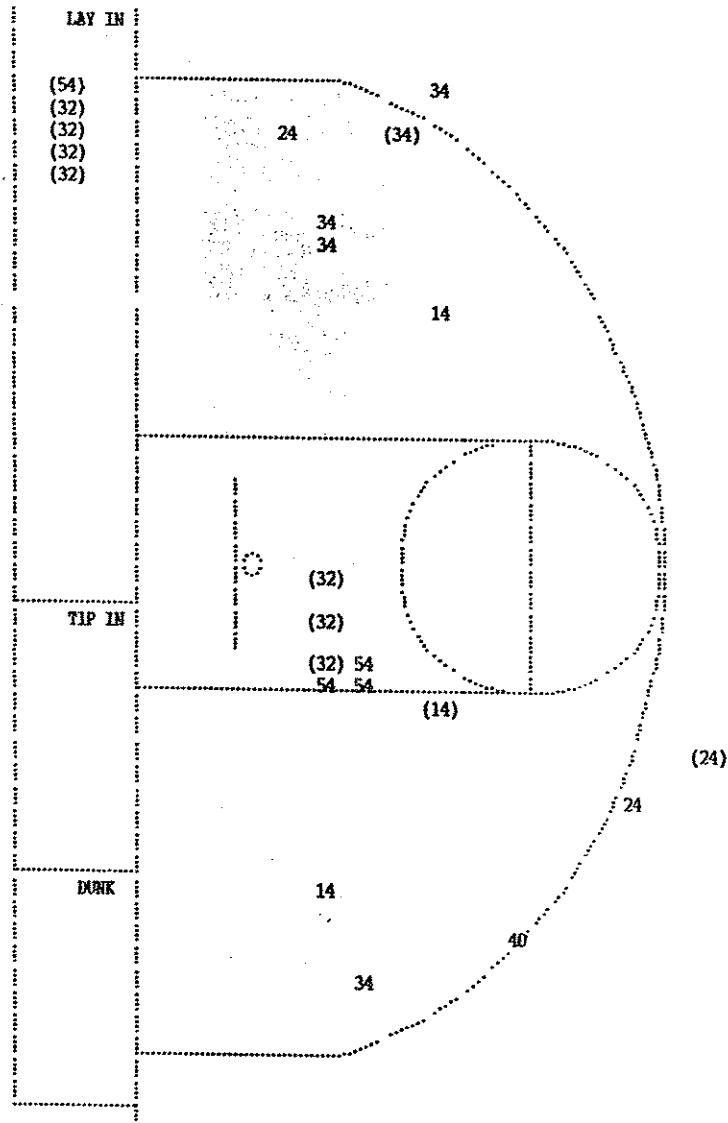
Clay County 6 TODD COUNTY CENTRAL 13 Clay County

SECOND CHANCE POINTS

10 TODD COUNTY CENTRAL 4

Player	Team	TODD COUNTY CENTRAL	Time	Score	Clay County	Player	Team
Edmonds, Tina, Brock, Laura, Harris, Gracie, Stewart, Letitia, Lassiter, Amy Ball to Lady Rebels			2 7:33	13-20*	Driving Layup by Brumley, Tonya Assist by Hoskins, Bobbi	1-1	100% 1-1 100%
1	1	Foul on Edmonds, Tina	2 7:00			1	1
			2 6:59		Subs In: Burns, Beth, Smith, Shannon, Dinsmore, Dawn Out: Hoskins, Bobbi, Howard, Angela, Jackson, Vonda		
			2 6:59	13-22*	Dinsmore, Jen., 2 Free Throws made both	2-2	100% 2-2 100%
1	1	Bad Pass by Brock, Laura	2 6:18		Steal by Dinsmore, Dawn	1	1
1	2	Foul on Brock, Laura	2 6:17				
Sub In: Laster, Sarah Out: Stewart, Letitia			2 6:13				
			2 6:13				
			2 5:48		Foul on Smith, Shannon	1	1
			2 5:48		Sub In: Howard, Angela Out: Burns, Beth		
			2 5:48		Sub In: Jackson, Vonda Out: Brumley, Tonya		
1-1	100%	1-5 20.0%	2 5:48				
3 ft Lane Jump shot by Harris, Gracie			2 5:48	*15-22			
			2 5:29		Foul on Dinsmore, Jen.	1	2
			2 5:29		Other Dinsmore, Jen.	1	1
2-2	100%	2-6 33.3%	2 5:15	*17-22			
1	1	Driving Layup by Harris, Gracie Assist by Stewart, Letitia	2 5:02				
1	3	Foul on Harris, Gracie	2 5:02	17-24*	Smith, Shannon, 2 Free Throws made both	2-2	100% 4-4 100%
			2 4:50		Steal by Dinsmore, Jen.	1	2
2	2	Alternate Possession Turnover by Brock, Laura	2 4:50				
			2 4:36		Bad Pass by Smith, Shannon	1	2
			2 4:38		Sub In: Hoskins, Bobbi Out: Smith, Shannon		
3-3	100%	3-7 42.8%	2 4:38	*19-24			
1	2	Driving Layup by Harris, Gracie Assist by Edmonds, Tina	2 3:51		Foul on Dinsmore, Jen.	2	3
			2 3:51		Player Control Foul Dinsmore, Jen.	2	3
			2 3:51		Sub In: Brumley, Tonya Out: Dinsmore, Dawn		
1-3	33.3%	4-8 50.0%	2 3:45	*22-24			
3 pt 23 ft Left Angle Jump shot by Brock, Laura			2 3:23	22-26*	3 ft Lane Driving by Dinsmore, Jen.	1-1	100% 2-4 50.0%
			2 2:44		Foul on Jackson, Vonda	1	4
			2 2:14		Traveling Violation on Jackson, Vonda	1	4
Sub In: Laster, Sarah Out: Stewart, Letitia			2 2:13				
			2 1:53		Foul on Brumley, Tonya	1	5
			2 1:53		Sub In: Dinsmore, Dawn Out: Jackson, Vonda		
0-2	00.0%	0-2 00.0%	2 1:53				
Laster, Sarah, 2 Free Throws missed both			2 1:42		Foul on Howard, Angela	1	6
			2 1:41		Player Control Foul Howard, Angela	1	5
4-4	100%	5-11 45.4%	2 1:28	*24-26			
2	3	2 ft Lane Turnaround by Harris, Gracie Assist by Edmonds, Tina	2 1:22	24-28*	18 ft Circle Jump shot by Howard, Angela Assist by Dinsmore, Jen.	1-1	100% 3-6 50.0%
			2 :56.8		Steal by Howard, Angela	1	3
3	3	Dribbling Error on Brock, Laura	2 :55.3				
			2 :45.7	24-30*	6 ft Left Side Turnaround by Brumley, Tonya Assist by Howard, Angela	2-3	66.6% 4-7 57.1%
			2 :35.8		Sub In: Smith, Shannon Out: Dinsmore, Jen.	1	3
			2 :35.4		Steal by Howard, Angela	2	4
4	4	Bad Pass by Brock, Laura	2 :28.7				
2	4	Foul on Brock, Laura	2 :10.4				
5	5	Other Brock, Laura	2 :10.4				
			2 :10.4		Sub In: Dinsmore, Jen. Out: Smith, Shannon		
D-2	Tot-3	D-4 Tot-5	2 :00.3				
Rebound by Harris, Gracie							

				TODD COUNTY CENTRAL		Clay County					
Player	Team			Time	Score			Player	Team		
Harris, Gracie ,Stewart,Letitia,Lassiter, Amy,Edmonds, Tina,Laster, Sarah						Howard, Angela ,Brumley, Tonya ,Jackson, Vonda ,Dinsmore, Jen. ,Hoskins, Bobbi		Ball to Tigerettes			
				1 7:51	0-2*	18 ft Left Side Fast Break by Howard, Angela		1-1	100%	1-1	100%
						Assist by Dinsmore, Jen.		1		1	
1-1	100%	1-3	33.3%	4 ft Lane Turnaround by Harris, Gracie	1 7:12	*2-2					
1		1		Steal by Laster, Sarah	1 7:00						
					1 7:00		Alternate Possession Turnover by Hoskins, Bobbi		1		1
1-2	50.0%	2-4	50.0%	Driving Layup by Lassiter, Amy	1 6:48	*4-2					
1		1		Assist by Stewart,Letitia							
1-2	50.0%	3-5	60.0%	3 pt 21 ft Right Side Jump shot by Stewart,Letitia	1 6:26	4-4*	Follow Layup by Brumley, Tonya		1-2	50.0%	2-5 40.0%
1		2		Assist by Laster, Sarah	1 6:16	*7-4					
1		1		Foul on Harris, Gracie	1 5:58						
					1 5:49	7-6*	Follow Layup by Brumley, Tonya		2-3	66.6%	3-8 37.5%
					1 5:24	7-8*	Fast Break Layup by Jackson, Vonda		1-1	100%	4-9 44.4%
							Assist by Dinsmore, Jen.		2		2
					1 4:50	7-10*	4 ft Lane Bank by Jackson, Vonda		2-2	100%	5-10 50.0%
							Assist by Dinsmore, Jen.		3		3
					1 4:40		Steal by Dinsmore, Jen.		1		1
					1 4:39						
					1 4:26		Foul on Hoskins, Bobbi		1		1
					1 4:26		Sub In: Burns, Beth Out: Hoskins, Bobbi				
1-2	50.0%	4-9	44.4%	10 ft Left Angle Jump shot by Edmonds, Tina	1 4:16	*9-10					
1		3		Assist by Lassiter, Amy							
					1 4:01		Traveling Violation on Brumley, Tonya		1		2
					1 3:48		Steal by Dinsmore, Jen.		2		2
					1 3:47						
					1 3:43		Out-of-Bounds by Burns, Beth		1		3
					1 3:43		Sub In: Dinsmore, Dawn Out: Jackson, Vonda				
					1 3:11	9-12*	2 ft Lane Bank by Dinsmore, Jen.		1-2	50.0%	6-14 42.8%
					1 2:54						
					1 2:54		Sub In: Hoskins, Bobbi Out: Burns, Beth				
					1 2:53		Sub In: Jackson, Vonda Out: Brumley, Tonya				
					1 2:50						
					1 2:50	9-14*	12 ft Lane Jump shot by Dinsmore, Dawn		1-1	100%	7-15 46.6%
							Assist by Hoskins, Bobbi		1		4
					1 2:22						
					1 2:14						
					1 2:13		Bad Pass by Dinsmore, Jen.		1		4
2-2	100%	5-11	45.4%	Fast Break Layup by Harris, Gracie	1 2:07	*11-14					
					1 1:31	11-16*	18 ft Right Side Jump shot by Howard, Angela		2-4	50.0%	8-18 44.4%
							Assist by Hoskins, Bobbi		2		5
					1 1:25		Steal by Jackson, Vonda		1		3
					1 1:24						
					1 1:12	11-18*	6 ft Lane Jump shot by Dinsmore, Dawn		2-3	66.6%	9-20 45.0%
							Assist by Dinsmore, Jen.		4		6
					1 :55.9		Steal by Jackson, Vonda		2		4
					1 :55.9						
							REB: 11 A: 6 BLK: 0 TO: 4 PF: 1				
							S: 4 FT: 0-0 00.0% FG: 9-20 45.0%				
							No. 1 TODD COUNTY CENTRAL T I M E - O U T				
3-3	100%	6-12	50.0%	Driving Layup by Harris, Gracie	1 :17.3	*13-18					
1		4		Assist by Brock, Laura							



TODD COUNTY CENTRAL						
Player						
32 - Harris, Gr	7 / 7	100.0%	24 - Brock, Lau	1 / 3	33.3%	
34 - Stewart, Le	1 / 5	20.0%				
54 - Lassiter,	1 / 4	25.0%				
14 - Edmonds, T	1 / 3	33.3%				
40 - Laster, Sa	0 / 1	0.0%				
Layups	1-9 Ft	10-15 Ft	Over 15 Ft	3 Pointers	Total	
5 / 5	3 / 6	1 / 3	0 / 3	2 / 6	11 / 23	
100.0%	50.0%	33.3%	0.0%	33.3%	47.8%	

CLAY COUNTY						
Player						
44 - Howard, An	3 / 5	60.0%	05 - Dinsmore,	2 / 6	33.3%	
52 - Brumley, T	4 / 6	66.6%	30 - Burns, Bet	0 / 2	0.0%	
50 - Jackson, V	2 / 3	66.6%	42 - Smith, Sha	0 / 1	0.0%	
21 - Dinsmore,	2 / 5	40.0%				
34 - Hoskins, B	0 / 4	0.0%				
Layups	1-9 Ft	10-15 Ft	Over 15 Ft	3 Pointers	Total	
4 / 5	5 / 10	1 / 3	3 / 7	0 / 7	13 / 32	
80.0%	50.0%	33.3%	42.9%	0.0%	40.6%	